



Poster Beds handmade by

*Andrew Reis*

*T*

HIS IS NO ORDINARY CATALOG, for reasons that you who treasure genuine hand-made furniture will appreciate: In the first place, the beds shown were not photographed in a studio or showroom, but in the homes of customers for whom we built them. In other words, these are beds we were commissioned to build for individuals who had seen Reid Reproductions in the homes of friends, or for the many decorators who are familiar with our craftsmanship.

When you order from this catalog, your bed will also be custom-built exactly as you want it and hand-finished to the last detail. You may order an exact duplicate of any bed illustrated, or any combination of posts and headboard. We also will gladly quote a price on any special design for which you send a picture or sketch.

Our guarantee: We will refund full purchase price and pay return express charges on any Reid Classic that fails to meet your highest expectations for beauty and quality.

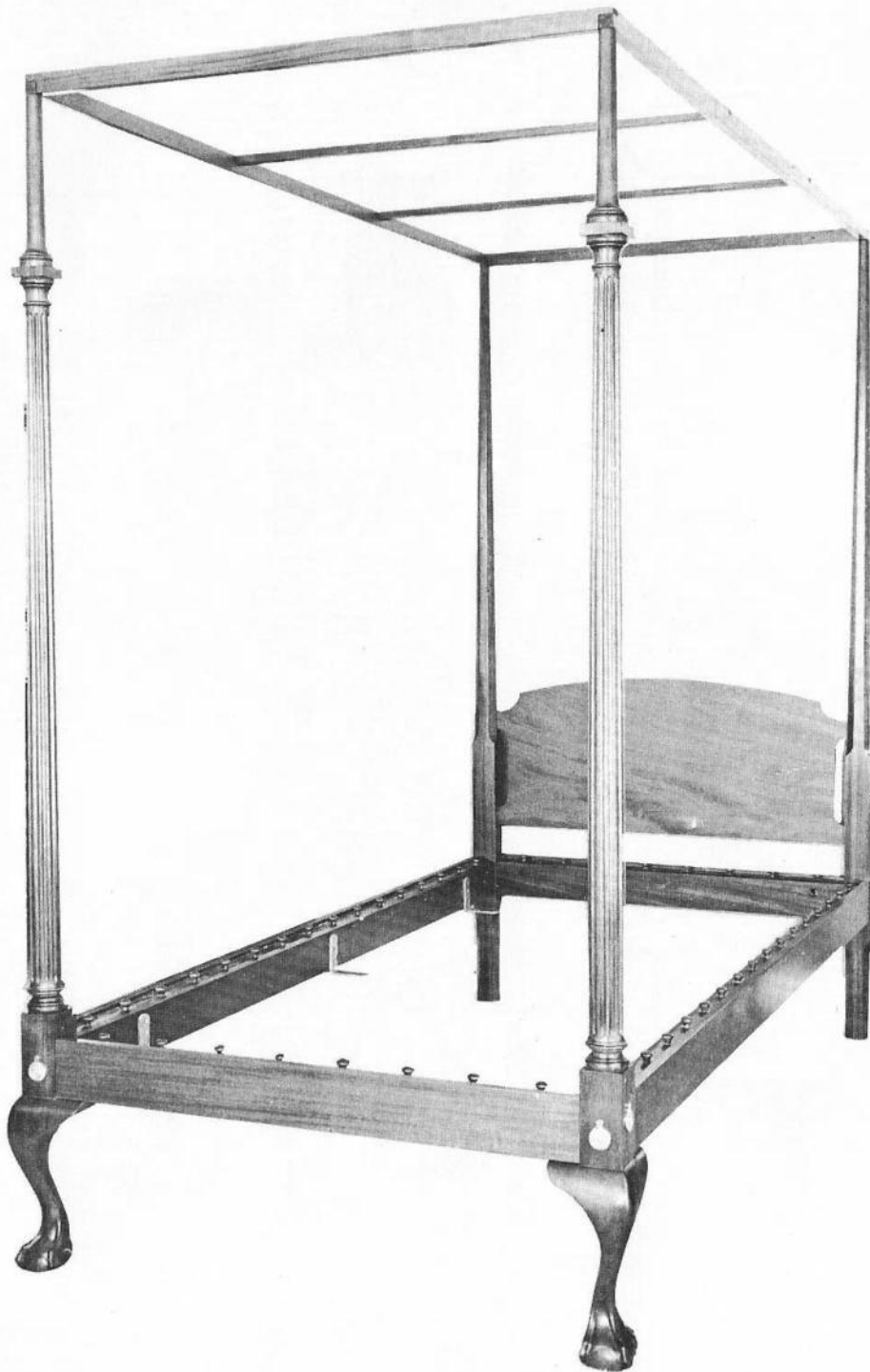


*Visitors are always welcome at our shop where you can see beds being made in various stages of construction.*

WE GRATEFULLY DEDICATE THIS CATALOG TO THE CUSTOMERS WHO WERE KIND ENOUGH TO PERMIT US TO PHOTOGRAPH THEIR REID CLASSICS TO ILLUSTRATE OUR WORK.



*Reid Classics*  
Est. 1938



Old English Bed #CD300      Posts #C and #D (Height 85")  
 Headboard #300      Tester Frame #50S

Since 1938, we have built furniture to order for customers who visited our shop and who knew our work first-hand. Through these years we observed that poster beds were the most-wanted single item of all the antique reproductions we were called upon to make.

The reason is obvious: no other piece can lend so much charm and beauty to the decor of virtually any style residence. And certainly no other item in the home is used as much, nor contributes as much to one's comfort and happiness!

This catalog was devised for the convenience of decorators and to enable individual customers who live elsewhere to order by mail. The 35 beds illustrated are a cross section of designs that will fill almost any requirement. They also comprise a collection we consider outstanding.

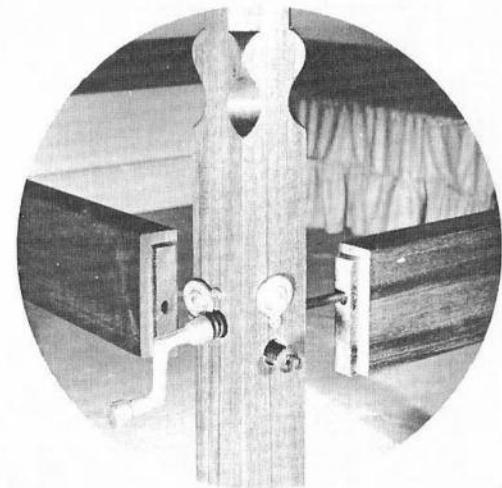
#### **Workmanship and Materials**

All the beds illustrated are solid Honduras Mahogany throughout, including rails, unless other wood is specified.

As you assemble any of these beds you will be impressed with the heft of the rails and the manner for locking rail to post. The rails on all tall posters are dressed out of stock of thickness two inches or more. The rails on the short posters average 1-3/4" x 4".

All beds are made to fit all sizes — single, double, queen and king — modern springs and mattresses. For off-standard sizes see price list. The finish is of quality in keeping with the skill and care that go into the manufacture of these beds. Nothing but the choicest materials are used and hand rubbed to the finest finish money can buy.

This bed bolt construction feature is most important: having spent years in the repair and refinishing of fine furniture (as well as building it) we are familiar with the many methods of assembling beds. The bolt construction we use on all beds is the only method that simply never fails — and we have seen it on beds as old as 200 years! The 2" thick side rails are solid Mahogany and a heavy nut is imbedded to receive the bolt, tightening rail into the post. Cast-brass covers conceal the holes.





Sheraton Post Bed #1100    Post #1000 (Height 78") Headboard #100  
 Tester Frame #10F (12" rise at center)

*If you have never seen furniture reproductions by Reid,  
 there is an easy way to assure yourself as to the quality  
 of our work -- simply ask your decorator to inquire of  
 any A.I.D. member decorator in our vicinity. They all  
 come to us for their better clients.*

*You may substitute any Headboard shown on Page 7  
 at no additional cost.*



\*Early American Bed  
 #2200  
 Post #2000  
 (Height 64½")  
 Headboard #200  
 Tester Frame #20F  
 (22" rise at center)  
 See Post Detail on  
 Page 7.



\*Colonial Bed  
 #4400  
 Post #4000  
 (Height 64½")  
 Headboard #400  
 Tester Frame #40F  
 (15" rise at center)  
 Lends itself to  
 many settings. Also  
 available in 78½"  
 ht. with Post #4000A.

Sheraton Post Bed  
#3300  
Post #3000  
(Height 80")  
Headboard #300  
Tester Frame #30F  
(6" rise at center)  
Posts have inlay  
of satinwood.



Sheraton Post Bed  
#6300  
Post #6000  
(Height 83")  
Headboard #300  
Tester Frame #11C  
Long, slim  
tapered posts.

*You may substitute  
any Headboard  
shown on Page 7, at  
no additional cost.*

Reeded Post Bed  
#5500AWR  
Post #5000  
(Height 77½")  
Headboard #500  
Tester Frame #10F  
(12" rise at center)  
Antique White  
rubbed in. Same  
design in mahogany  
color, Bed #5500R.



Sheraton Post Bed  
#6600  
Post #6000  
(Height 83")  
Headboard #600  
Tester Frame #22C  
Note the fine  
arched and molded  
tester.

\*Pencil Post  
#7007  
Post #7000  
(Height 83")  
Panel Headboard  
shown (#700 also  
recommended)  
Tester Frame #11C



\* Asterisks denote  
beds especially good  
in native woods  
(maple, cherry,  
walnut) available at  
slight higher cost.  
We will quote upon  
request. Unless  
otherwise specified,  
beds marked \* will  
be furnished in  
mahogany with  
medium fruit-wood  
nutty-brown color.

Plantation Bed  
#8400  
Post #800  
(Height 83")  
Headboard #400  
(Tester #50S  
recommended. See  
Bed G-303, Page 11)

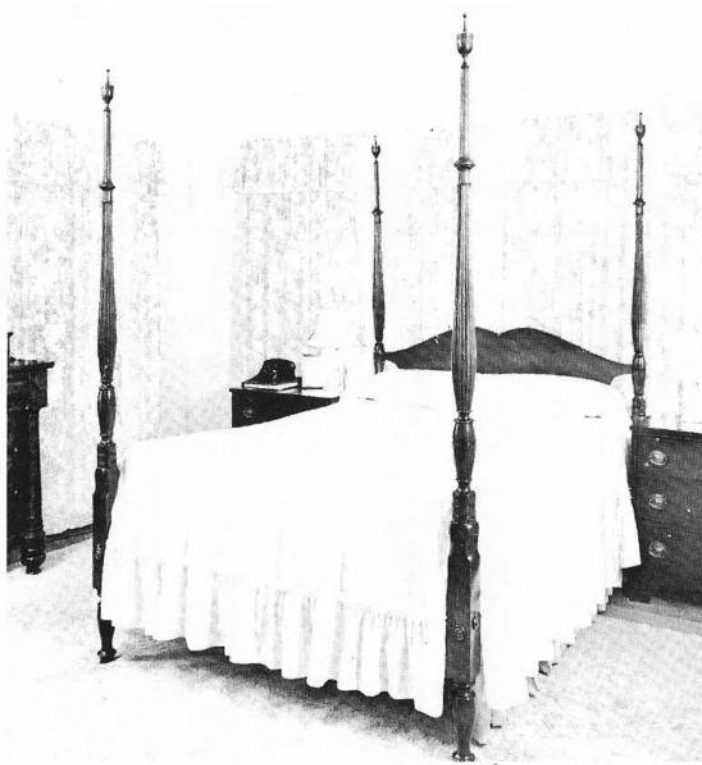


\*Pencil Post  
#7700  
Post #7000  
(Height 83")  
Headboard #700  
Tester Frame #30F  
(6" rise at center)



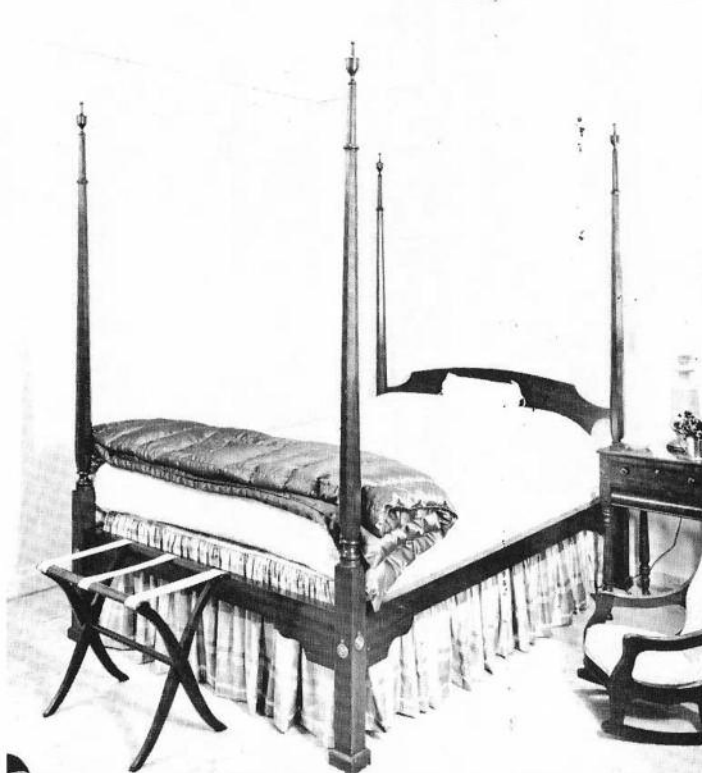
Reeded Post Bed  
#E400  
Post #E  
(Height 78½")  
Headboard #400  
Tester Frame #40F  
(15" rise at center)

Reeded Post Bed  
#1100R  
Post #1000R  
(Height 78")  
Headboard #100  
(Tester Frame  
#10F recommended)

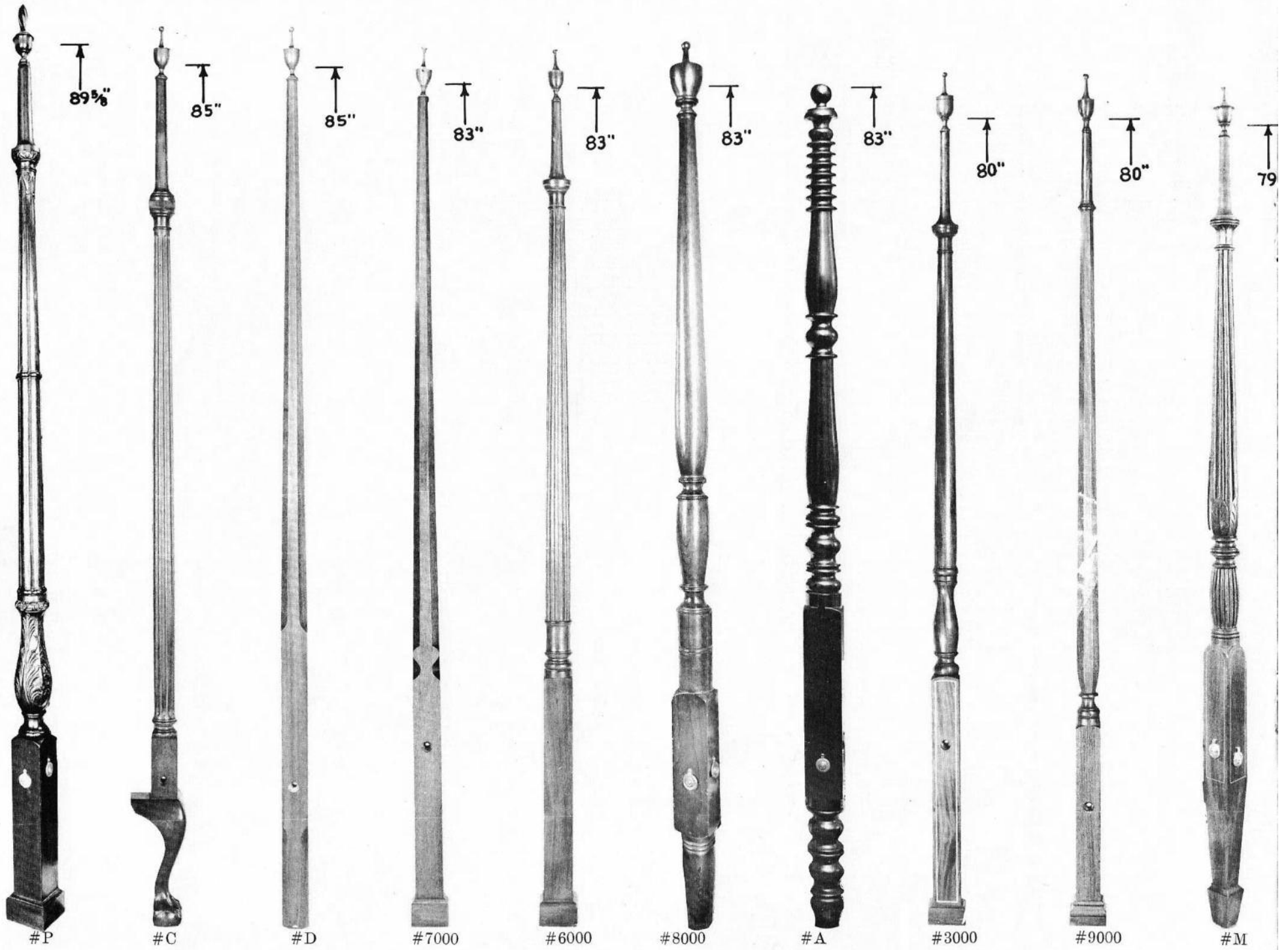


Med. High Post Bed  
#B300  
Post #B  
(Height 64½")  
Headboard #300  
Variation of Bed # 4400

Pencil Post Bed  
#9300  
Post #9000  
(Height 80")  
Headboard #300  
Classic beauty.



Early Victorian Bed  
#F202  
Post #5 (Ht. 78")  
For this bed only  
you may substitute  
any Headboard on  
Page 7, at a re-  
duction in price.





If you select your Posts and Headboard from this page, please give both Post # and Headboard # of your choice, when ordering. To determine the price of your bed, see price list under "Posts". Headboards shown at right may be substituted on any Reid Classic bed shown, unless otherwise specified, at no additional cost.



#E



#F



#1000  
(Reeded  
#1000R)



#5000  
(Reeded  
#5000R)



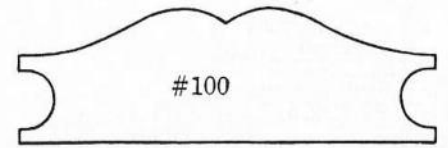
#B



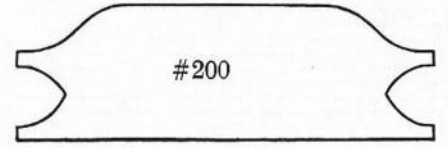
#4000  
(78" Post  
#4000A)



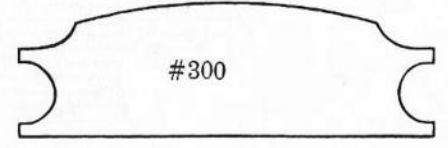
#2000



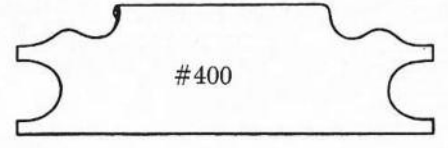
#100



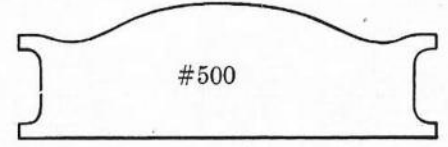
#200



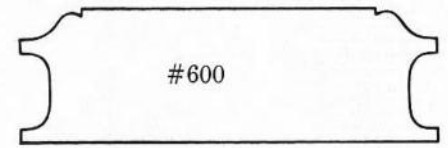
#300



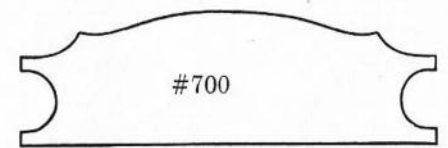
#400



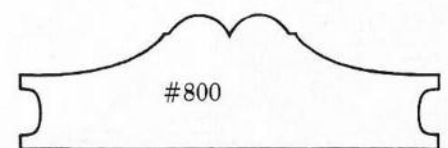
#500



#600



#700



#800



\*Bed shown above #LP111 Head Post Height 46"  
Foot Post Height 32"



Bed shown above #LP133 Head and Foot Post  
Height 48"

### From Our Low Post Collection...

Bed shown below #LP122 Head Post Height 55"  
Foot Post Height 38"



\*Bed shown below #LP144 Head Post Height 52"  
Foot Post Height 34"



### --a word about design

As you study these pages you will be aware that there is none of the monotonous sameness of design that is so noticeable in lines of furniture produced by most manufacturers today. The reason is that these beds are faithful reproductions of original creations of many different Masters of Old England, Colonial America, and Early Ante Bellum South.

The accumulation of such a variety of authentic designs, as you can well imagine, represents many years of research by ourselves as well as by customers who brought them to us.

*With this catalog you can order direct from our shop less than these beds would cost if sold through retail dealers. And where could you find a store in which you could choose from such a variety!*



\*Bed shown above #LP155 Head and Foot Post Height 40"



Bed shown above #LP177 Head and Foot Post Height 42"

*\* Asterisks throughout this catalog denote beds that are good in other woods as well as our standard Mahogany. Maple, Cherry and Walnut are available at extra cost, each finished in the color you wish. Mahogany beds marked \* unless otherwise specified are finished in medium - fruit-wood (nutty brown).*

It's worth the few weeks you may have to wait for delivery because you will know that your bed was hand-made just for you. In the event we may require longer than six weeks to fill your order we will notify you by return mail.

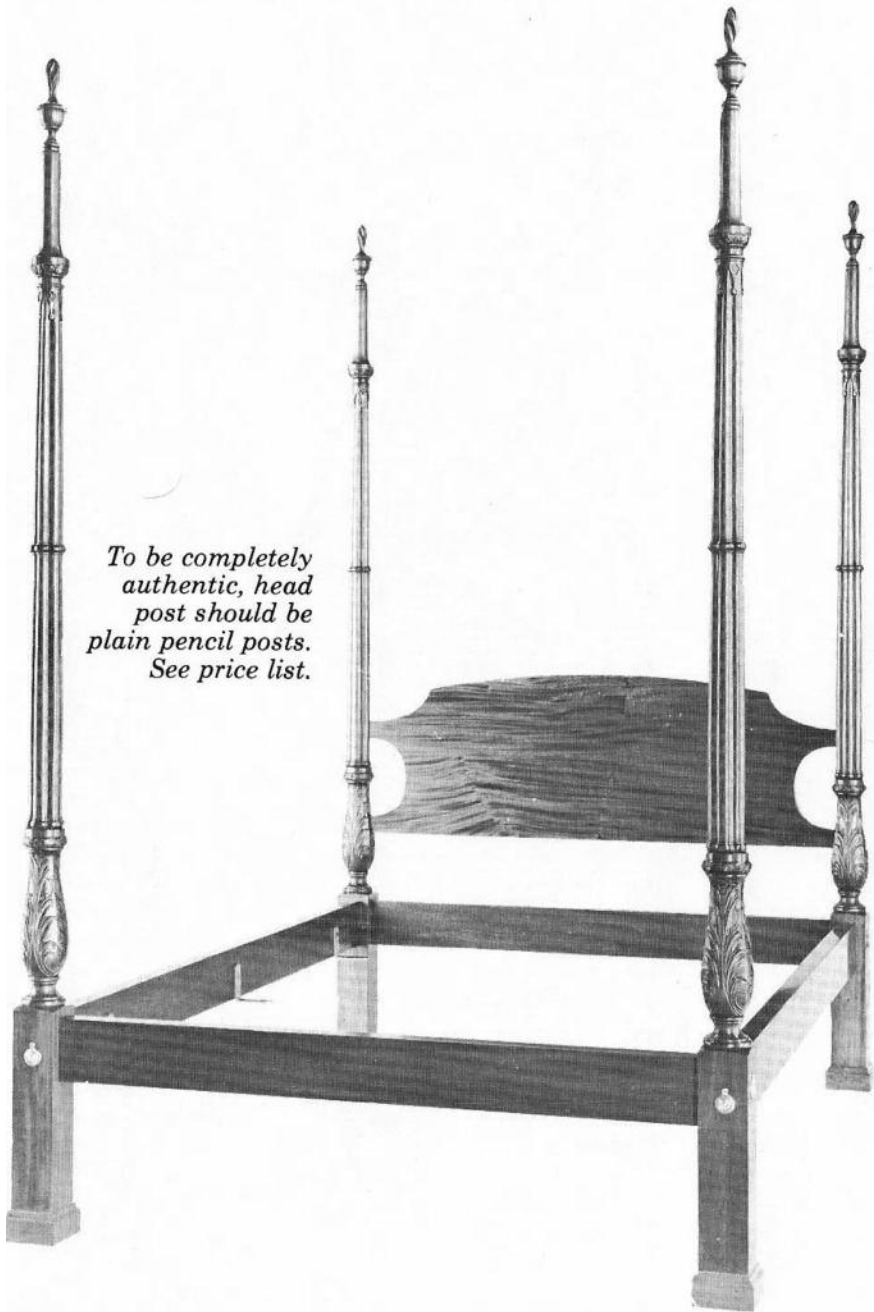
## All Beds Available in any size - see price list

\*Bed shown below #LP166 Head and Foot Post Height 41½"



\*Bed shown below #LP188 Head and Foot Post Height 49½"





*To be completely authentic, head post should be plain pencil posts. See price list.*

Gothic Bed #P300 Post #P (Height 89 5/8") Headboard #300  
 This is the best example we have seen in which the design of cluster columns in the ancient Gothic cathedrals is incorporated in furniture for the home.

\*Victorian Bed  
 #A101  
 Post #A  
 (Height 83")  
 Headboard cannot  
 be substituted.  
 Bed #A102 same as  
 shown with 76"  
 high posts.

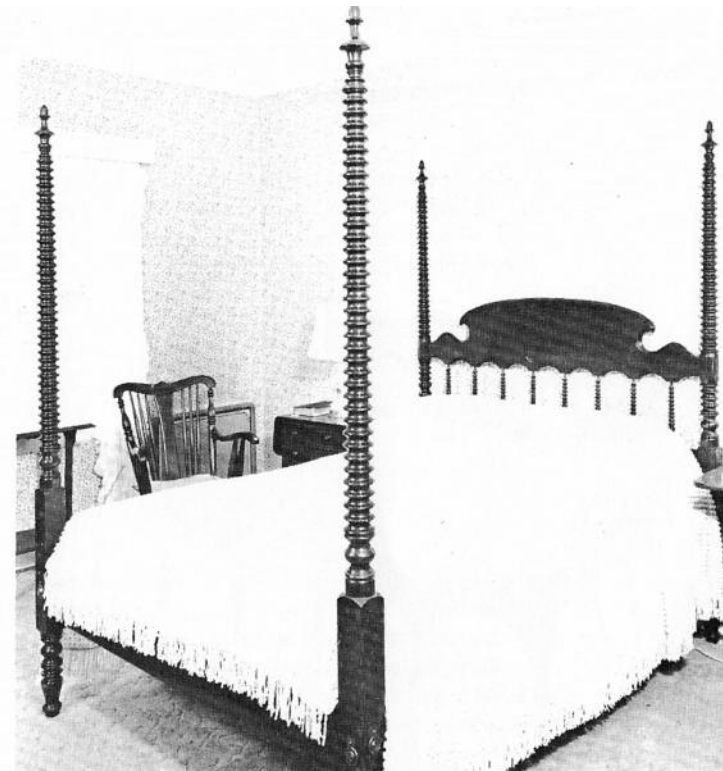


Traditional Bed  
 #HBC4  
 Nice in twin size  
 as shown. Also  
 available in double.





\*High Post Spool Bed  
#G303 (left)  
(Post Height 88")  
Headboard cannot  
be substituted.  
Tester Frame #50S



\*High Post Button Bed  
#J505 (right)  
(Post Height 77½")  
Headboard cannot  
be substituted.  
Reminiscent of the  
1820's.



\*Low Post Spool Bed  
#H404 (left)  
(Post Height 45")  
Headboard cannot  
be substituted.  
Charming and  
beautifully  
proportioned for  
twin size.



\*Spindled Bed  
#K606  
(Post Height 39¼")  
Panel Headboard  
cannot be substituted.

\*Asterisks denote beds especially good  
in native woods (Maple, Birch, Cherry,  
Walnut), available at slightly higher  
cost.



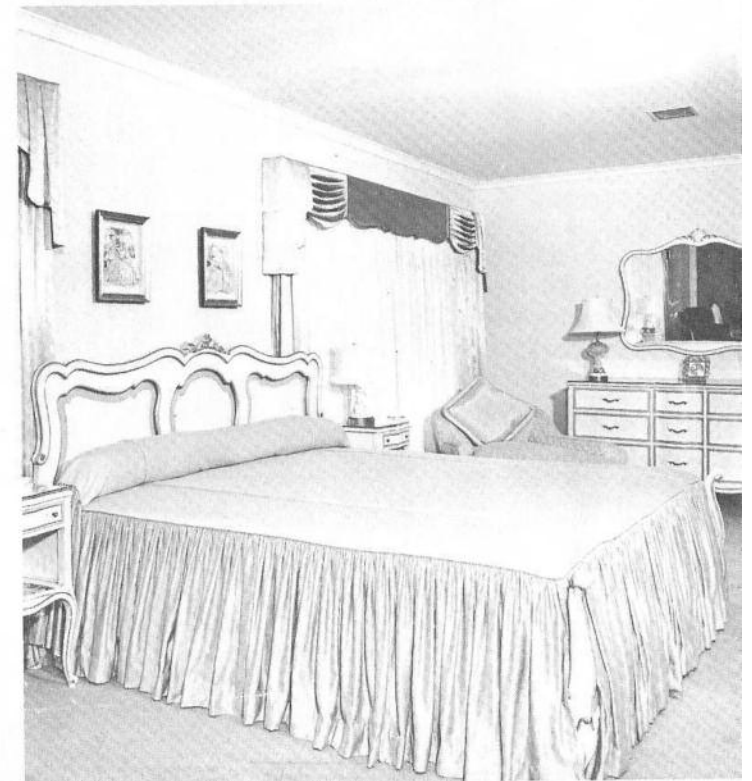
Oriental Head Section  
 #HBR1  
 Post #7000 (Ht. 83")  
 Finished in black  
 lacquer with Chinese  
 Red trim on headboard.  
 See your local decorator  
 for tester and drapery  
 arrangement.  
 (Size 76" x 80")



Designer's Head Section  
 #HB03  
 (Post Height 80")  
 (Size 76" x 80")



Colonial Head Section  
 #HBW2  
 Post #7000 (Ht. 83")  
 (Size 76" x 80")



French Provencal Bed  
 #FPB700  
 Antique White and Gold.  
 Shown in 80" wide  
 King Size (two single  
 springs and one 80"  
 overall mattress.)  
 (Size 76" x 80")

## Important--Please Read Carefully

The introduction of genuine Mahogany to European craftsmen created an inspiration that brought on a new era of furniture design, abruptly ending the heavy, grotesque style that prevailed when only native woods were used.

It is for this reason that we choose genuine Honduras Mahogany as our standard material for the beds in this catalog, since almost all of them were built of the same majestic wood by the masters who first created them.

At the same time, some of the designs herein lend themselves equally well to the characteristics of other woods and for this reason we can usually furnish any bed in Cherry, Maple, or Walnut, at additional cost. (Prices on request)

### **Color and Finish**

Each Reid Classic Mahogany Bed is the true color of the authentic antique from which it was reproduced, which means that the color of the hand-rubbed soft finish may vary from the dark, rich brown of Victorian models to lighter fruitwood tones of Colonial pieces. We will furnish other colors on special request.

### **Delivery**

Two to three months is the time we ordinarily require to make a bed to order and ship. In the event we need more time, we will notify you upon receipt of order.



*Reid Classics*  
Est. 1938



*Reid Classics*  
*Est 1938*

---

377 Southgate Road  
Dothan, Alabama 36301

[www.ReidClassics.com](http://www.ReidClassics.com)

Phone us at  
334.796.9021  
or  
251.342.1414

Reid Classics is owned and operated by third generation Andrew Reid.